

Quick Start Guide for LoadVUE-CG

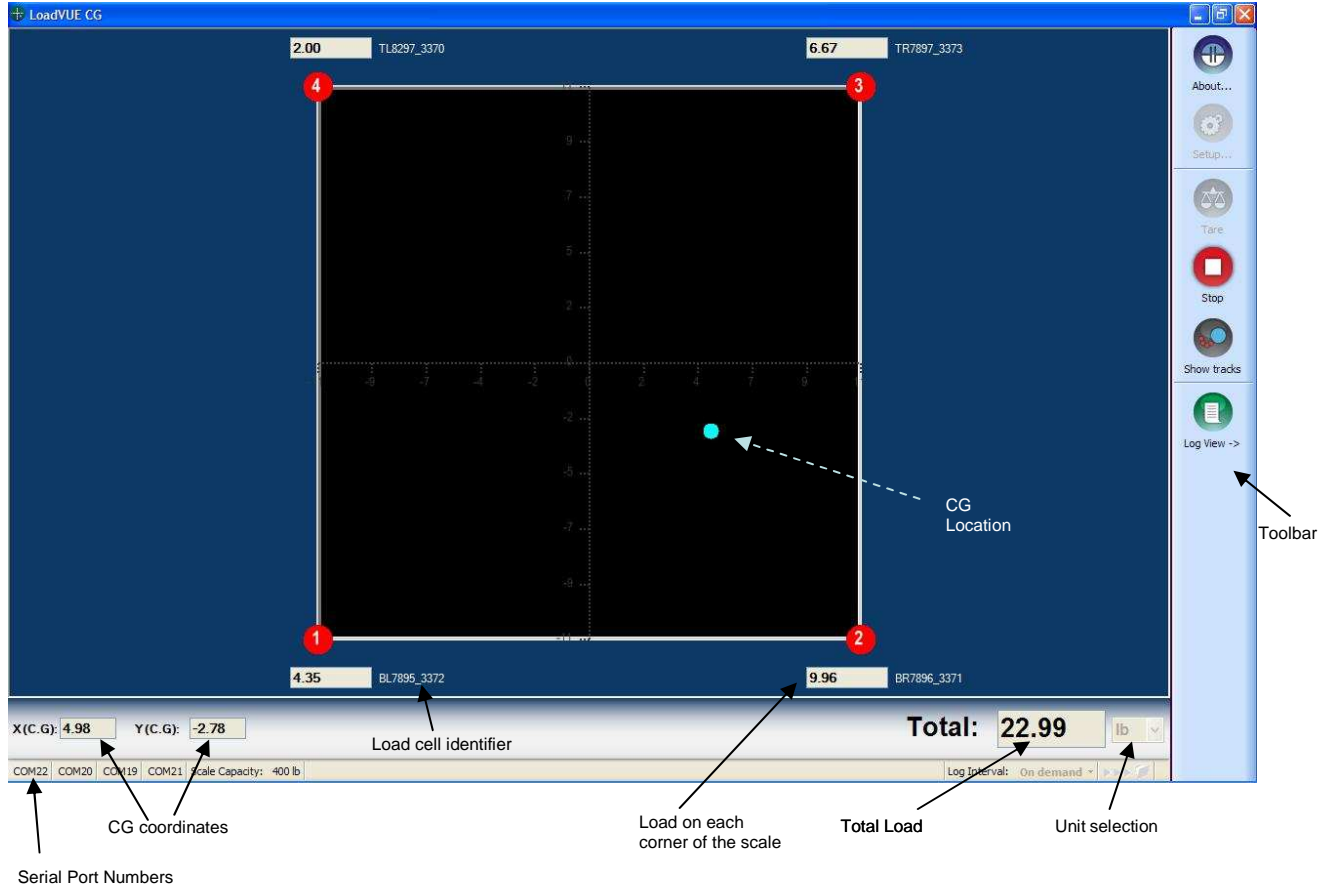
1. Install LoadVUE-CG first. This will also install the drivers needed. (The drivers can also be installed by downloading and running http://www.ftdichip.com/Drivers/CDM/CDM20814_Setup.exe)
2. Connect all the four load cells to the computer's USB port (using a hub if necessary).
3. This will add 4 USB Serial Port entries to the Device Manager, one for each load cell.
4. Run LoadVUE-CG by clicking on the LoadVUE-CG shortcut on the desktop.



5. LoadVUE-CG will scan the USB ports for connected load cells.

Note: A unique identifier is assigned to each load cell/interface unit. The software uses these identifiers to locate the load cells correctly on each corner of the scale. (For example, if the identifier begins with “BL...” then the load cell is assumed to be on the bottom left of the scale. If the identifier begins with “TR...” then the load cell is assumed to be on the top right of the scale.)

6. LoadVUE-CG main screen is then displayed. The various parts of this screen are identified below.

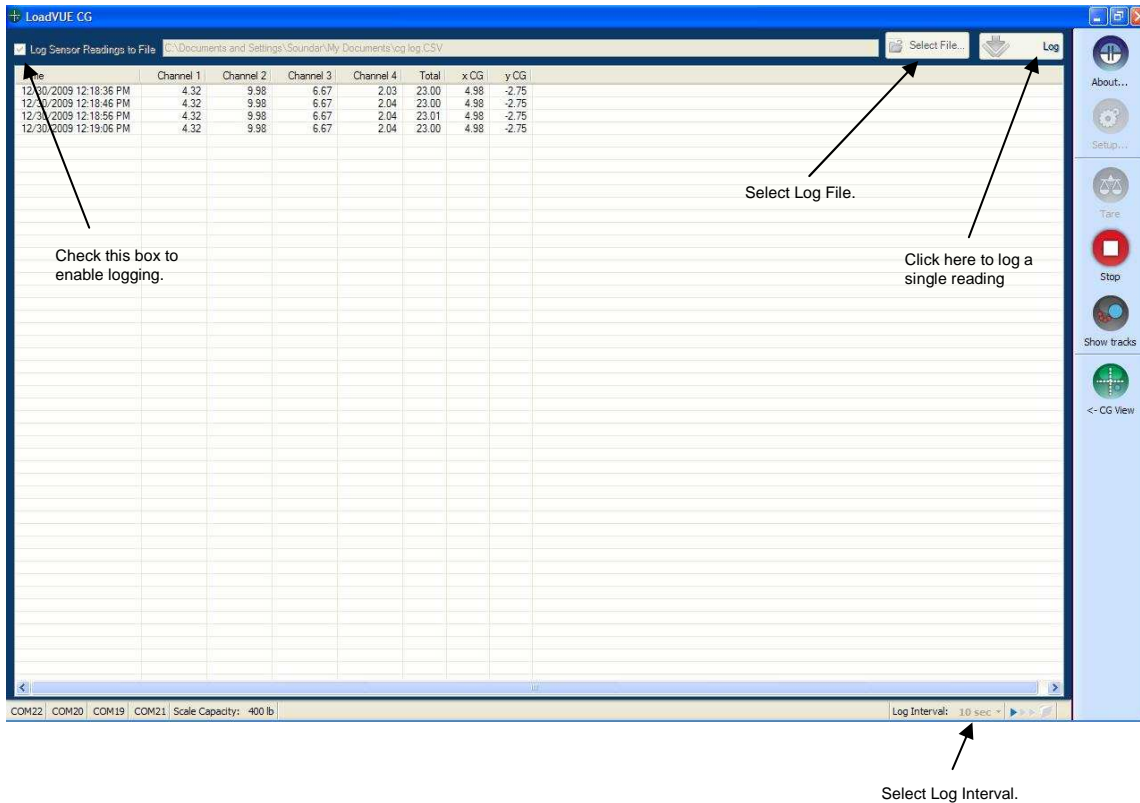


- Click on **Setup...COM Ports Setup...** on the toolbar to configure the dimensions of the CG platform. The default dim is 24" x 24". (See attached sheet for actual dimensions between the load cell mounting points.). If you desire to change the default orientation of the platform, you can reassign the load cells to different corners using this screen.



- Click **Tare** to zero out the load on all the four load cells.
- Click **Start** to start reading the load on the platform. Individual loads will be read and CG will be computed and displayed.
- Click **Stop** to stop reading.

11. Click on **Log View ->** to switch to the log window.



12. In this view,

- Check the **Log Sensor Readings to File** to enable logging. The logging can either be at predetermined intervals or on demand.
- Click on the **Log Interval** to select a log interval time. (Log at 1 sec, 10 sec, 1 min ... etc) and then click **Start** to start logging.
- If you have selected the 'On Demand' option, after you click **Start**, click on the **Log Now** button whenever you want to log a single reading of the scale.
- Click **Stop** to stop reading the scale and to stop logging.
- Click on **<- CG View** and **Log View ->** buttons on the toolbar to switch between the two views.

