
Quick Start Guide for StockVUE

The StockVUE inventory monitoring system consists of three parts

1. Loadstar Sensors smart bin scales and associated hardware.
2. A StockVUE Client Windows program that is installed in a local computer. The local computer is connected to the StockVUE hardware through either wired or wireless means. The local computer must be connected to the internet. The StockVUE Client program reads the weights off the load cells, and uploads readings to the StockVUE Server on the internet.
3. An internet application that is accessed from your browser. (<http://loadstarsensors.com/stockvue/...>) This application uses the part weights and the uploaded bin readings to compute the inventory. This requires no installation.

1. Hardware Setup

An SC-1200 interface unit and load cells/bins.

- A. *If you have a Zigbee wireless dongle, then your SC-1200 is wireless enabled. Physical connection to the computer is not required. Simply connect the Zigbee dongle to any of the computer's USB ports. (Windows will ask for the drivers – the drivers will be installed in step 2 StockVue client installation below).*



... Proceed to step B.

- B. *If you do not have a Zigbee wireless dongle, connect SC1200-Master's Uplink-Z port to the "RS422-to-USB" adapter (see below). Then plug the USB to an available port on your computer. The Windows OS will automatically assign a COM port. Note: The blue cable is a standard Ethernet CAT5E cable. If longer length is required, you may substitute this cable with a longer Ethernet CAT5E cable for up to 100m.*



- C. If you have more than 12 load cells, then you need to daisy chain the SC-1200s. Connect SC1200-Master's Downlink-A to SC1200-Slave's Uplink-Y (as shown below).



Each load cell/bin combination is uniquely identified with a 8 character identifier, for example, **M50.R00.C00.S01**, **M50.R00.C00.S02**, ...**S03**, etc. This depends only on the port it is connected to, not to the scale itself.

- Attach the cable from the bin marked "...S01" to port number 1 of the SC-1200,
- Attach the cable from the bin marked "...S02" to port number 2 of the SC-1200, and so on.
- The photo below shows 10 bins connected.



Plug in the power supply module to DC-IN of the SC-1200 and power up. Verify that the green LEDs are lit.



Identify the parts that you want to monitor. Using a weigh scale measure the weight of each part as accurately as possible. If you have small parts, you should use a lot of them, preferably about 50% of bin capacity, to compute the weight. Currently StockVUE accepts only pound units.

Make sure all the bins are empty before you proceed to Step 2 below.

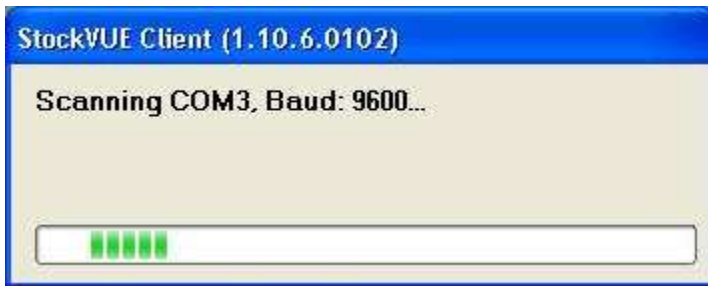
2. Windows Application – StockVUE Client

Install StockVUE using the CD or the link provided. A shortcut will be added to the desktop.

Run StockVUE Client by double-clicking on the icon for StockVUE on the desktop.



StockVUE will scan the PC peripherals for the attached SC-1200.



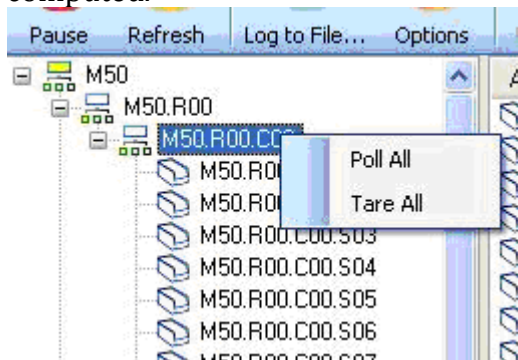
StockVUE main window will now be displayed. Click on the Start button to start reading the load cells.



After a few seconds, all the load cells will be recognized and will be displayed in a tree structure on the left of the screen.

At this point, you need to zero out the load cells. To do this

- Make sure the bins are on the load cells and they are all empty.
- Right click on the root of the load cell tree and choose 'Tare All'. You should do this only when you are sure the bins are empty. Otherwise wrong inventory will be computed.



- Right click again and choose 'Poll All' (You can also tare and poll individual load cells)

Click on **Options...Setup Auto Poll Timings...** to automatically poll the bins at regular intervals.

The sensors will now be polled automatically at the specified intervals.

Note: The desktop application has no knowledge of the part details such as SKU, unit weight etc. All this information is stored on the web.

3. View Inventory on the Web

Click on the StockVUE URL on the desktop to open the home page for StockVUE in your default browser. (You can also navigate to <http://www.loadstarsensors.com/stockvue>)



1. Log in using your user id and password.
2. Click on **Load Cells** navigation link. The load cells provided to you will be listed. We have assigned a placeholder for each part.

Home Inventory Parts Load Cells My Profile Administration			
Load Cell ID	Assigned Part		
M50.R00.C00.S01	<input type="radio"/> None/Delete	<input checked="" type="radio"/> Assign to:	111 Part 111 ▾
M50.R00.C00.S02	<input type="radio"/> None/Delete	<input checked="" type="radio"/> Assign to:	222 Part 222 ▾
M50.R00.C00.S03	<input type="radio"/> None/Delete	<input checked="" type="radio"/> Assign to:	333 Part 333 ▾
M50.R00.C00.S04	<input type="radio"/> None/Delete	<input checked="" type="radio"/> Assign to:	444 Part 444 ▾
M50.R00.C00.S05	<input type="radio"/> None/Delete	<input checked="" type="radio"/> Assign to:	555 Part 555 ▾
M50.R00.C00.S06	<input type="radio"/> None/Delete	<input checked="" type="radio"/> Assign to:	666 Part 666 ▾

OK Cancel

3. Click on **Parts** navigation link. These placeholder parts are listed here. **Edit** each of the parts and enter real part information such as SKU, Description etc that correspond to your hardware setup. **You should also enter the weight of each part here, as accurately as possible.** The StockVUE inventory system uses this unit weight to compute the number of parts in the bin. You are also required to enter the Max
4. /Min/Critical reorder points. (The cost price per unit and the sale price per unit are not currently used by your version of StockVUE; you may just enter 1 to get rid of the 'required field' warning.)
5. Then click on the **Inventory by Parts** page. As data from the load cells arrive, the inventory status will be updated. Refresh the browser to see the latest data. The **Inventory by Scales** Page shows the inventory in each bin/scale.

Status	Part ID	SKU	Description	Max/Min/Critical Quantity	Total Wt. (lb.)	Unit Weight (lb.)	Unit Sale Price (\$)	Quantity in Stock
■	120	530-01900	Adapter,Plug,NA to UK grounded	100 / 10 / 5	0.295	0.1125	1.00	3

Use the Administration page to add email addresses to which StockVUE can send a status of the critical and low inventories.

Note: *If the StockVUE on the local PC, in Step 2, is not running and actively polling and uploading data, email alerts will not be sent out.*

It is a good idea to add the StockVUE client to the Windows Startup group, so it runs automatically on startup.