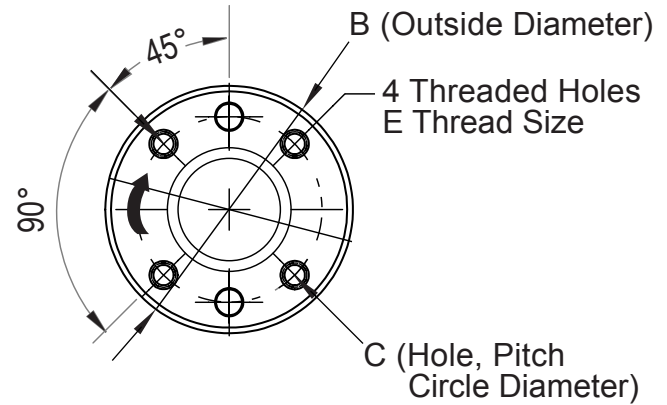
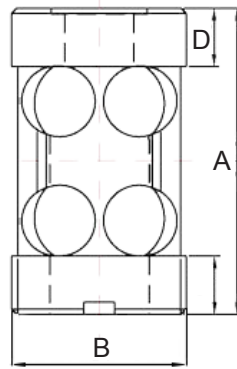


RST1 Reaction Torque Sensor



Accuracy Specifications

| Accuracy | |
|-------------------|--------------------|
| Non-linearity | ± 1% of Full Scale |
| Hysteresis | ± 1% of Full Scale |
| Non-repeatability | ± 1% of Full Scale |

Load Cell Specifications

| Typical Values | |
|--------------------------------|--------------------------------|
| Zero Balance | 1% of Full Scale |
| Safe Overload | 150% of Full Scale |
| Ultimate Overload | 200% of Full Scale |
| Full Scale Output | 2 ± 1% mv/V |
| Input Impedance | 410 ± 30 Ω |
| Output Impedance | 350 ± 4 Ω |
| Insulation | ≥ 2000 MΩ / 50 V DC |
| Recommended Excitation Voltage | 10 V DC |
| Compensated Temperature Range | 14 to 100 °F (-10 to 40 °C) |
| Temperature Effect on Zero | 0.036% of F.S. / 10°C |
| Temperature Effect on Span | 0.036% of F.S. / 10°C |

Dimensions

| Capacity | Nm | | | |
|----------|-------|-------|-------|-------|
| | 6 | 10 | 60 | 150 |
| A | 50.8 | 50.8 | 50.8 | 50.8 |
| B | 37.6 | 37.6 | 37.6 | 37.6 |
| C | 22.86 | 22.86 | 25.40 | 25.40 |
| D | 12.8 | 12.8 | 12.9 | 12.9 |
| E | M3 | M3 | M5 | M5 |

(All dimensions are in mm)

Wiring Information

| Cable Color Code | |
|------------------|--------------|
| Red | + Excitation |
| Black | - Excitation |
| Green | + Signal |
| White | - Signal |

Ordering Information

| Capacity | Part No. |
|----------|------------|
| 6 N-m | RST1-006NM |
| 10 N-m | RST1-010NM |
| 60 N-m | RST1-060NM |
| 150 N-m | RST1-150NM |

Recommended Interfaces



DI-100U/DI-1000U
Digital Load Cell Interface



DI-1000ZP/DI-1000WiFi/
DI-1000-BLE
Wireless Load Cell Interface

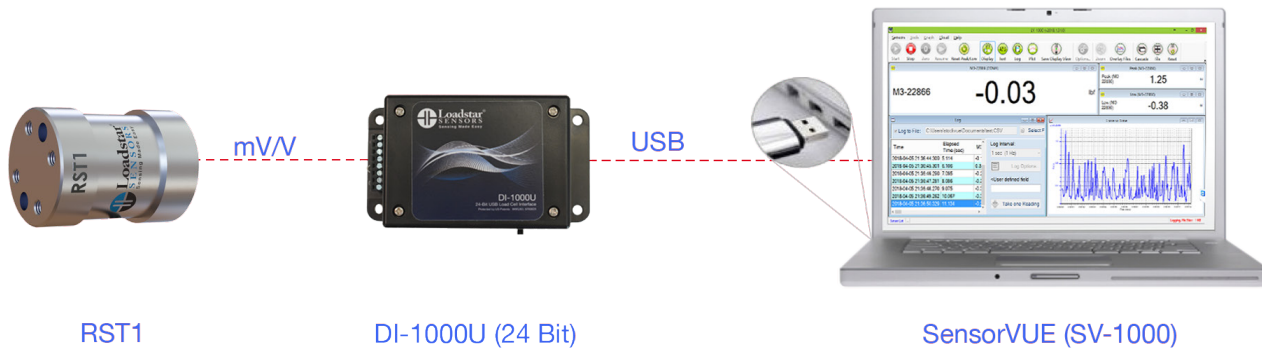


AI-1000/AI-1000-CV
Signal Conditioner



DS-3000-Pro/DS-4000-Pro
Touch Screen Display

USB Load Cell Configuration



Wireless Load Cell Configuration



Analog Load Cell Configuration

