

LoadVUE for SC-1200 User Guide

Thank you for choosing Loadstar Sensors.

Need additional help?

Call us at 510-623-9600 or email us

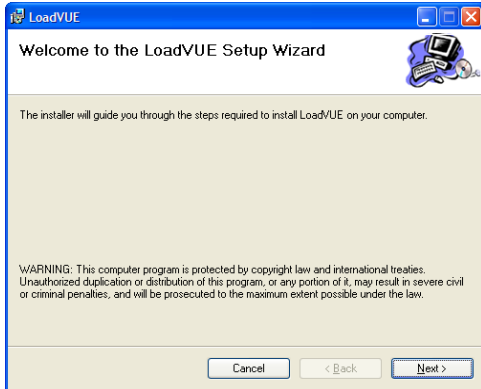
at support@loadstarsensors.com

-
- *Due to continuous improvements the actual screens of LoadVUE software may differ from the screenshots depicted in this user guide.*
-

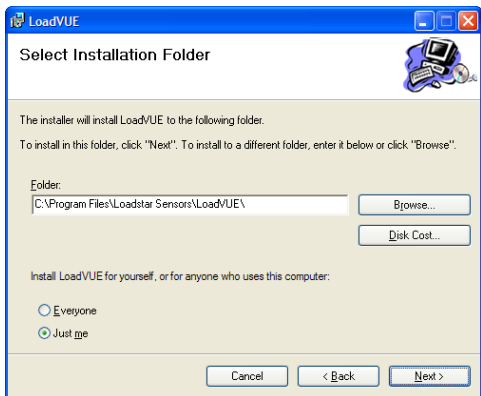


Installation

Insert the LoadVUE CD-ROM into your drive. The installation Wizard should start up automatically. If it does not, click **Start...Run....** and use the **Browse** button to select X:\setup.exe where X: stands for the letter of your CD-ROM drive. Click OK until the LoadVUE setup screen appears. Click **Next**.



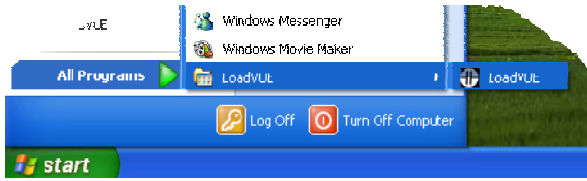
Select the installation folder. Click **Next** twice and LoadVUE will be installed. During installation you will also be prompted to install the drivers for the SC-1200.



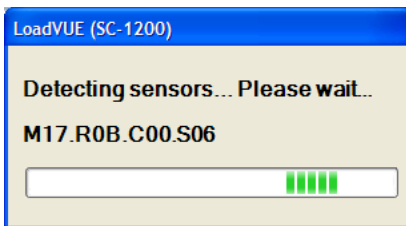
Note: LoadVUE requires the presence of Microsoft .NET Framework. Most versions of Windows XP and Windows Vista already contain .NET Framework. If your computer does not have it, you will be prompted to install it.

Operation

To run LoadVUE, click **All Programs...LoadVUE** or double-click on the Desktop shortcut for LoadVUE.



LoadVUE will scan all installed COM ports for attached sensors.



The LoadVUE main window is now shown with the default layout for displaying readings from up to 12 sensors as well as the total load. Peak and Low loads are also shown.

Time	Sensor 1	Sensor 2	Sensor 3	Sensor 4	Sensor 5	Sensor 6	Sensor 7	Sensor 8	Sensor 9	Sensor 10	Sensor 11	Sensor 12	Total
06/05/2009 7:15:50 PM	8.80	0.06	5.81	1.12	1.71	9.74	0.98	0.33	5.30	5.45	3.07	0.23	42.60
06/05/2009 7:15:55 PM	8.80	0.06	5.81	1.12	1.71	9.74	0.98	0.33	5.30	5.45	3.07	0.23	42.60
06/05/2009 7:16:00 PM	8.80	0.06	5.81	1.12	1.71	9.74	0.98	0.33	5.30	5.45	3.07	0.23	42.60
06/05/2009 7:16:05 PM	8.80	0.06	5.81	1.12	1.71	9.74	0.98	0.33	5.30	5.45	3.07	0.23	42.60
06/05/2009 7:16:10 PM	8.80	0.06	5.81	1.12	1.71	9.74	0.98	0.33	5.30	5.45	3.07	0.23	42.60
06/05/2009 7:16:15 PM	8.80	0.06	5.81	1.12	1.71	9.74	0.98	0.33	5.30	5.45	3.07	0.23	42.60
06/05/2009 7:16:20 PM	8.80	0.06	5.81	1.12	1.71	9.74	0.98	0.33	5.30	5.45	3.07	0.23	42.59
06/05/2009 7:16:25 PM	8.80	0.06	5.81	1.12	1.71	9.74	0.98	0.33	5.30	5.45	3.07	0.23	42.59
06/05/2009 7:16:30 PM	8.80	0.06	5.81	1.12	1.71	9.74	0.98	0.33	5.30	5.45	3.07	0.23	42.59
06/05/2009 7:16:35 PM	8.80	0.06	5.81	1.12	1.71	9.74	0.98	0.33	5.30	5.45	3.07	0.23	42.59
06/05/2009 7:16:40 PM	8.80	0.06	5.80	1.12	1.71	9.74	0.98	0.33	5.30	5.45	3.07	0.23	42.59

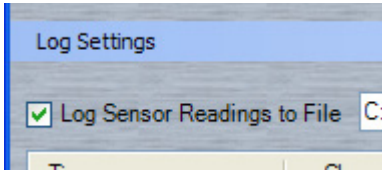
Click **Tare All** to zero the load on the sensors. Further sensor readings will subtract the load at this point.

Click **Start** to start reading the sensors.

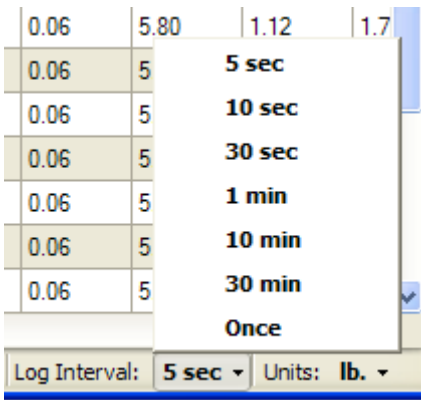
Click on **Increase Decimals** or **Decrease Decimals** to adjust the decimals displayed. This option is available only when the sensors are being read.



Click on **Log to File** to log the sensor readings to a comma separated file (.CSV) that can be read by Microsoft Excel. Data can be logged at intervals of 5 seconds or more.



Click on the arrow next to the **Log Interval** on the status bar to set the rate at which data is logged to file.



Click on the arrow next to the **Units** on the status bar to change the units in which the load is displayed.

