

## Special Instructions for High Data Output Rate Sensors

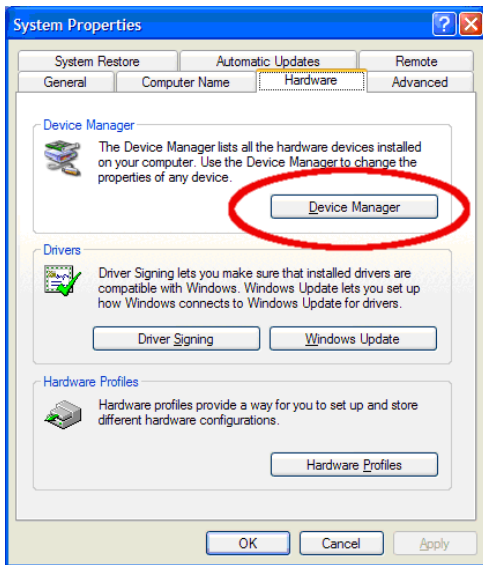
Some versions of iLoad Digital USB load cells and interfaces offer a high data output rate for high speed data acquisition. When used with these load cells or interfaces, LoadVUE can log data at these high rates (at the **Maximum** log interval setting). To obtain data at these higher rates, you must change the COM port settings as shown below.

---

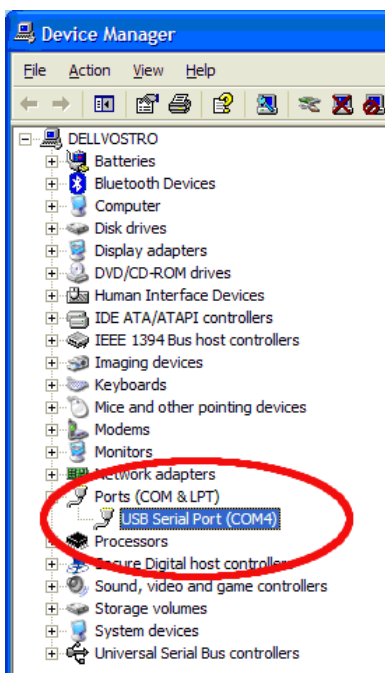
**Note:** The actual logging rate will depend on the computer speed. It is strongly recommended that a dual-core (or more) processor be used to log the data for high throughput load cells.

---

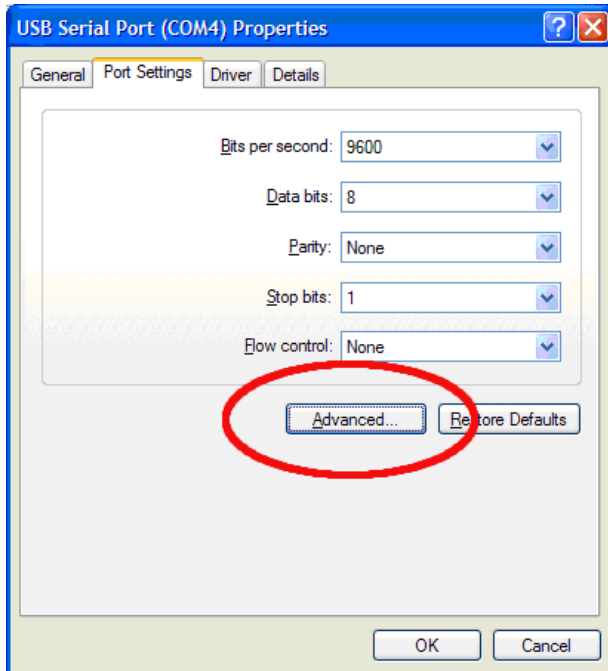
Open the Hardware Device Manager. You can do so by going to the Control Panel in Windows and double-clicking on **System**. On the System dialog box click on the Hardware tab and click on the **Device Manager** button.



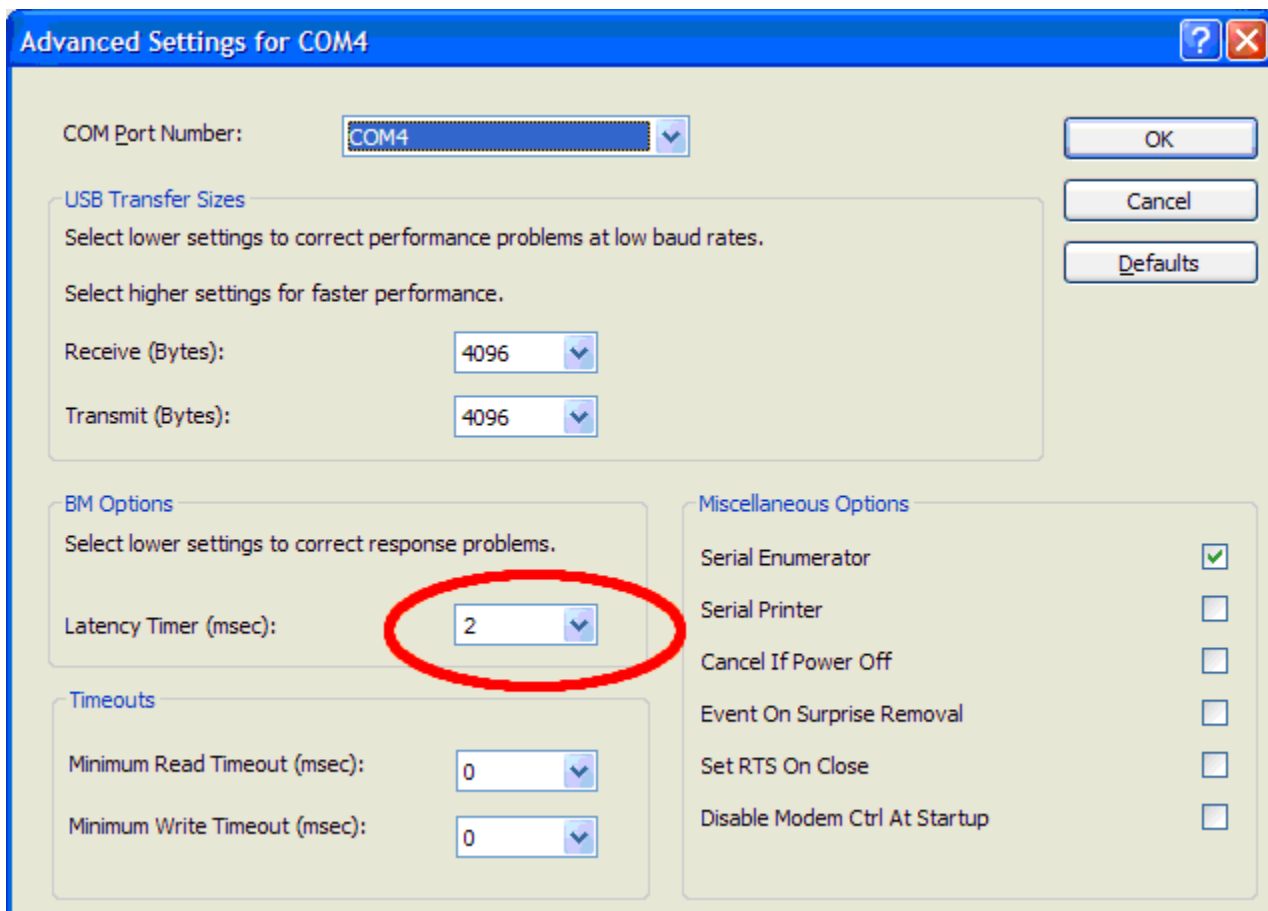
When your iLoad Digital USB sensors is connected and correctly installed, you should see a COM port assigned to it as shown highlighted in the following screen shot (next page).



Right-click on the COM port and select **Properties**. Select the **Port Settings** tab and click on **Advanced...**



Set the **Latency Timer** to 2



Click **OK** to save the settings.